

VievePharm
ANIMAL NUTRITION

CALCIN BOLUS

**For Treatment And Control
Of Milk Fever**

ALL IN ONE

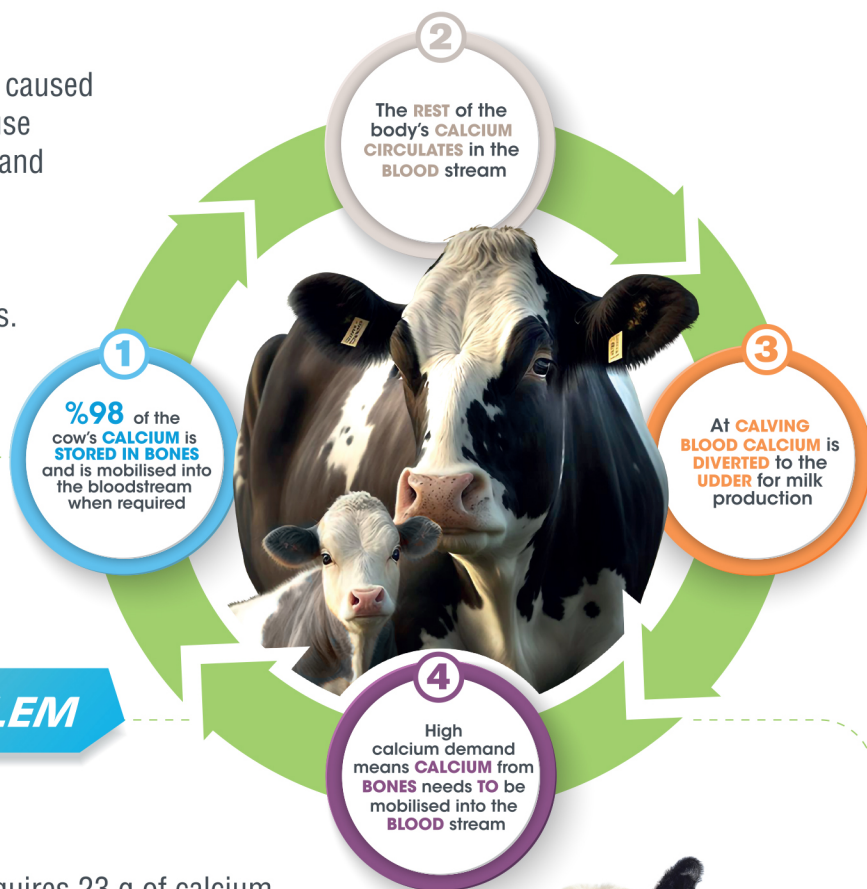


Made in
Holland

MILK FEVER

Milk fever or hypocalcaemia, is a disorder caused by low blood calcium levels, it occurs because the cow has an imbalance between her demand for calcium and her ability to mobilise her own calcium reserves quickly enough, so she can go into 'NCB'* for a time, If she gets into this state milk fever develops.

* Negative Calcium Balance



MANAGING THE PROBLEM

The production of 10 kg of colostrum requires 23 g of calcium. A cow producing 25 kg of colostrum would have to replace her total blood calcium level every hour. Helping animals cope with 'the delay' in adjusting to this huge change in the demand for calcium **by using slow release calcium boluses is proving to be both popular and effective.**



COSTS ASSOCIATED WITH MILK FEVER

	MILK FEVER	DISPLACED ABOMASUM	RETAINED PLACENTA
Death	%8 of cases die	%2 of cases die	%1 of cases die
Culling Rate	%12 of affected cows are culled	%10 of affected cows are culled	%18 of affected cows are culled
Milk Loss	Average milk loss is 500 litres	Average milk loss is 380 litres	Average milk loss is 205 litres Discarded milk is 135 litres
Cost/Case	Average cost per case is 230£	Average cost per case is 400£	Average cost per case is 250£

Why Calcin

- ✔ **All in one bolus.** by treating All in one bolus with the Calcin you prevent, among other things, a **Calcium and Phosphorus** deficiency. This is a quite unique combination calcium and phosphorus deficiency.
- ✔ **Magnesium** plays a crucial role in the cow's parathyroid gland (PTH) and contributes to the natural regulation of calcium levels in the blood.
- ✔ **Multiple calcium sources,** not only a **rapid** release of Calcium, but also a **prolonged** release. A cow therefore not only receives a boost and then drops back again, but the bolus also provides it with calcium for a longer period of time (Calcium Carbonate).
- ✔ **Efficiency! A pressed bolus** without a coating is more soluble and therefore releases the various sources more quickly. On contrary in a **coated bolus**, the coating of wax "to decrease the acidogenic side effects of its ingredients" must first dissolve before coated bolus can release its resources.
- ✔ **Organically bounded forms** of calcium, phosphorus, and magnesium are that are much better absorbable than the inorganic forms like calcium chloride is a cheap source of calcium. Calcium sulfate is better known as gypsum, very cheap and poorly absorbable source of Calcium.
- ✔ **Calcium acetate** is used in milk **fat synthesis** in dairy cows.
- ✔ **Dicalciumphosphate** needed for the **fixation** of calcium in the body, often a calcium deficiency also leads to a phosphorus deficiency.
- ✔ **Vitamin D** ensures **better calcium** and phosphor **binding** and **absorption**.
- ✔ **Inulin is a prebiotic,** ensures rapid and efficient **absorption of minerals**.

CALCIN BOLUS



WHY VIEVEPHARM?

- a Dutch product
- GMP+ certified
- European raw materials
- Analysed by accredited laboratories
- Innovation through collaboration with universities

Composition:

Various sources of calcium

Vitamin D

Phosphorus

Magnesium

Prebiotics

Inulin



FEEDING ADVICE

- 1 bolus 24-12 hours before calving
- 1 bolus immediately after calving
- 1 bolus 12 hours after calving
- 1 bolus 24 hours after calving



Administration:

Orally, using a suitable bolus applicator.



8X95GR. PACKAGE
TWO YEARS AFTER PRODUCTION DATE

VievePharm
ANIMAL NUTRITION

Best of Nature

www.vievepharm.com



- ☎ 00 20 155 7776253 - 00 20 100 0906253
- ☎ 0227509318
- ✉ info@tulip-trade.com
- 📍 Villa 14, Street 74 Maadi, Cairo Egypt
- 🌐 www.tulip-trade.com